

Table of contents

Series ICK-09

Page 6-02



Series PKX-10

Page 6-06



Series ICK-10

Page 6-02



Series ICKN-55

Page 6-08



Series KMX-09

Page 6-04



Series KNX-55

Page 6-10



Series KMX-10

Page 6-04



Series PNX-55

Page 6-12



Series PKX-09

Page 6-06



Accessories and spare parts

Page 6-14



Series ICK-09 and ICK-10

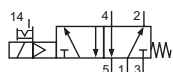
Technical details

Connection	ICK-09: G1/8 ICK-10: G1/4
Nominal size	ICK-09: 6 mm ICK-10: 9 mm
Temperature range	-30°C ... +80°C
Medium	Filtered, oil-free and dried compressed air according to ISO 8573-1:2010, Class 7:2:4, instrument air, free of aggressive additives. Differing the pressure dew point must be at least 10°C below lowest occurring ambient temperature.
Materials	Body: Al (anodized), seals: FKM and PU, inner parts: Al, stainless steel and brass
Protection	IP 65 according to EN 60529

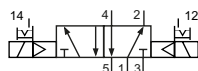


Electrically operated spool valve. The manual override is detent and is operated by screwdriver.

5/2-way valves

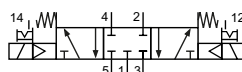


ICK-09-511-HN-xxx
ICK-10-511-HN-xxx
5/2-way, single solenoid, mechanical spring return



ICK-09-520-HN-xxx
ICK-10-520-HN-xxx
5/2-way, double solenoid

5/3-way valves



ICK-09-530-HN-xxx
ICK-10-530-HN-xxx
5/3-way, center position closed

Please complete: xxx = electrical option

Electrical options

Nominal voltage	Power consumption	Specifics	Plug connection ^{*1}	-xxx Manual override on same side of ports	
				2 and 4	1, 3 and 5
24 V DC	4.2 W		Form B industrial norm	-F42	-F12

^{*1} Plug socket not included, suitable plug sockets see page 6-14.

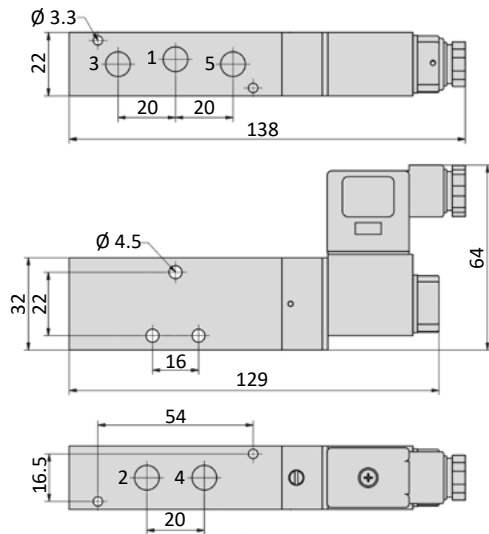
Technical data

Model-no.:	ICK-09-511	ICK-09-520	ICK-09-530	ICK-10-511	ICK-10-520	ICK-10-530
Operating pressure (bar)	3 ... 8	3 ... 8	3 ... 8	2.5 ... 8	2.5 ... 8	3 ... 8
Pilot pressure (bar)	3 ... 8	3 ... 8	3 ... 8	2.5 ... 8	2.5 ... 8	3 ... 8
Flow rate (l/min)	810	950	680	1800	2100	1500
Response time (ms) at 6 bar	on: 13 off: 28	on: 15 off: 15	on: 14 off: 16	on: 16 off: 27	on: 18 off: 18	on: 16 off: 22
Weight (kg)	0.231	0.330	0.330	0.470	0.630	0.630

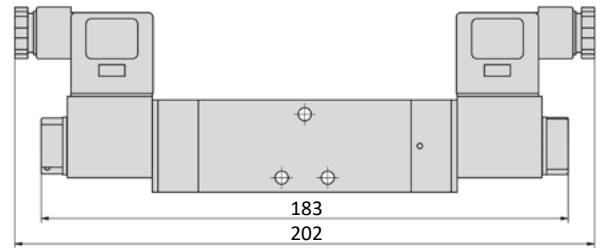
Series ICK-09 and ICK-10

Dimensions

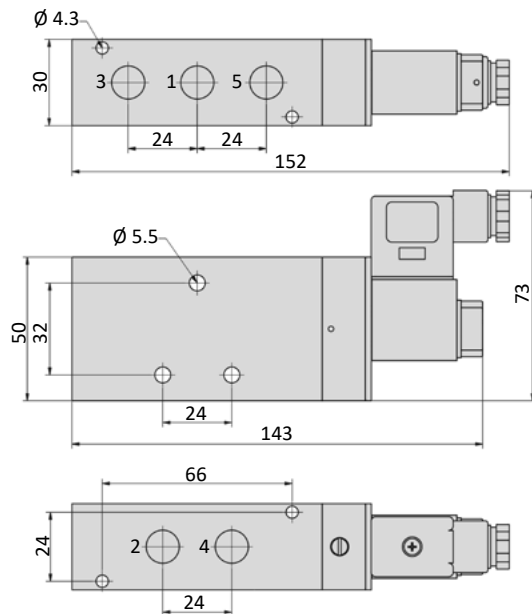
ICK-09-511-HN



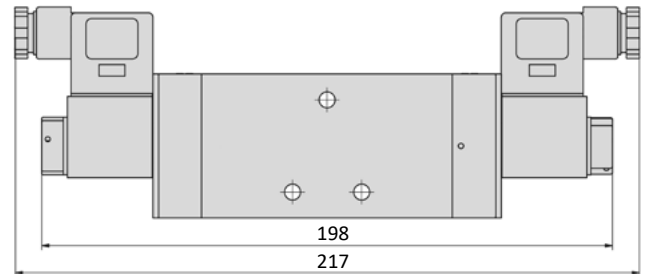
ICK-09-520-HN, ICK-09-530-HN



ICK-10-511-HN



ICK-10-520-HN, ICK-10-530-HN



1 = pressure inlet
2,4 = outlets
3,5 = exhausts

Plug socket (not included in scope of delivery) can be repositioned by 180°. Solenoid coil can be repositioned.

Accessories



Plug sockets: page 6-14

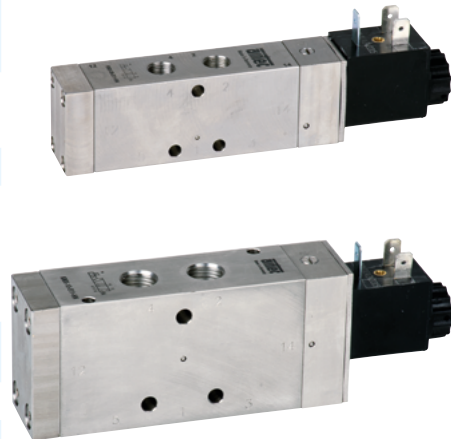
Manifolds and accessories: page 4-21

Series KMX-09 and KMX-10



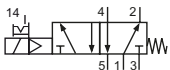
Technical details

Connection	KMX-09: G1/8 KMX-10: G1/4
Nominal size	KMX-09: 6 mm KMX-10: 9 mm
Temperature range	-30°C ... +80°C
Medium	Filtered, oil-free and dried compressed air according to ISO 8573-1:2010, Class 7:2:4, instrument air, free of aggressive additives. Differing the pressure dew point must be at least 10°C below lowest occurring ambient temperature.
Materials	Body: stainless steel 1.4571, seals: FKM and PU, inner parts: stainless steel 1.4305
Protection	IP 65 according to EN 60529
	Valves in accordance with 2014/34/EU (ATEX) available. (Chapter 13)

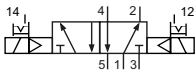


Electrically operated spool valve. The manual override is detent and is operated by screwdriver.

5/2-way valves

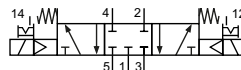


KMX-09-511-HN-xxx
KMX-10-511-HN-xxx
5/2-way, single solenoid, mechanical spring return



KMX-09-520-HN-xxx
KMX-10-520-HN-xxx
5/2-way, double solenoid

5/3-way valve



KMX-10-530-HN-xxx
5/3-way, center position closed

Please complete: xxx = electrical option

Electrical options

Nominal voltage	Power consumption	Specifics	Plug connection*1	-xxx Manual override on same side of ports	
				2 and 4	1, 3 and 5
24 V DC	4.2 W		Form B industrial norm	-F42	-F12

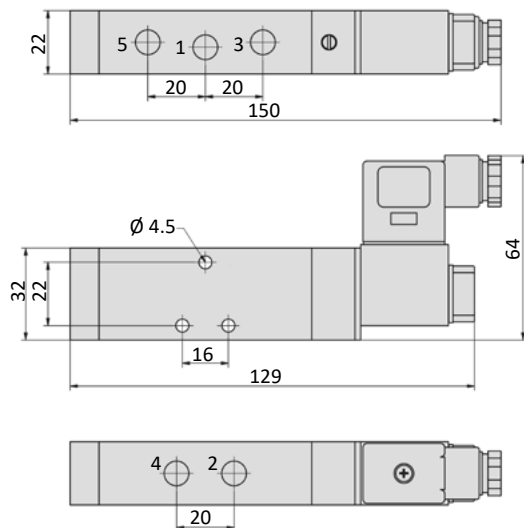
*1 Plug socket not included, suitable plug sockets see page 6-14.

Technical data

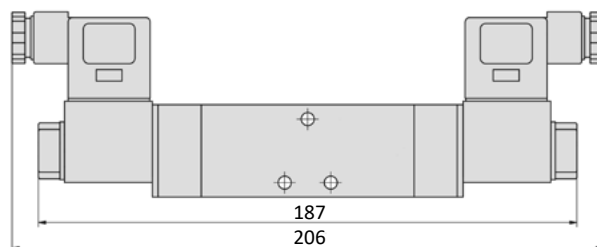
Model-no.:	KMX-09-511	KMX-09-520	KMX-10-511	KMX-10-520	KMX-10-530
Operating pressure (bar)	3 ... 8	3 ... 8	3 ... 8	3 ... 8	3 ... 8
Pilot pressure (bar)	3 ... 8	3 ... 8	3 ... 8	3 ... 8	3 ... 8
Flow rate (l/min)	810	950	1800	2100	1500
Response time (ms) at 6 bar	on: 13 off: 28	on: 15 off: 15	on: 16 off: 27	on: 18 off: 18	on: 16 off: 22
Weight (kg)	0.231	0.330	0.470	0.630	0.630

Dimensions

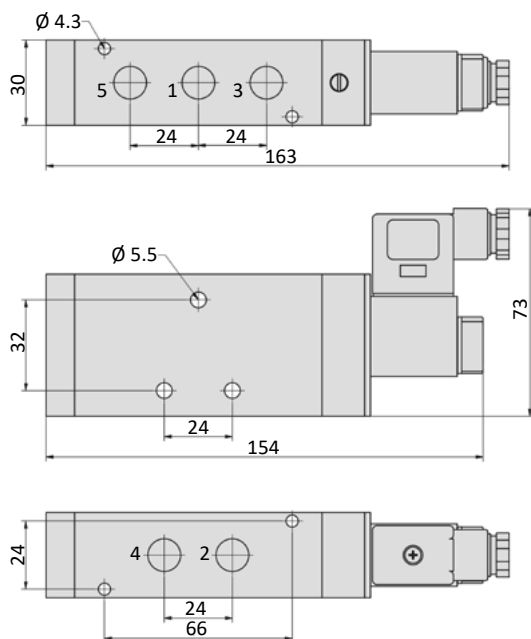
KMX-09-511-HN



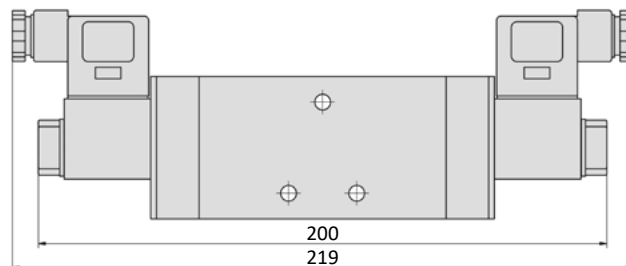
KMX-09-520-HN



KMX-10-511-HN



KMX-10-520-HN, KMX-10-530-HN



1 = pressure inlet
2,4 = outlets
3,5 = exhausts

Plug socket (not included in scope of delivery) can be repositioned by 180°. Solenoid coil can be repositioned.

Accessories



Plug sockets: page 6-14

Series PKX-09 and PKX-10



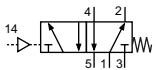
Technical details

Connection	PKX-09: G1/8 PKX-10: G1/4
Nominal size	PKX-09: 6 mm PKX-10: 9 mm
Temperature range	-30°C ... +80°C
Medium	Filtered, oil-free and dried compressed air according to ISO 8573-1:2010, Class 7:2:4, instrument air, free of aggressive additives. Differing the pressure dew point must be at least 10°C below lowest occurring ambient temperature.
Materials	Body: stainless steel 1.4571, seals: FKM and PU, inner parts: stainless steel 1.4305
Protection	IP 65 according to EN 60529
	Valves in accordance with 2014/34/EU (ATEX) available. (Chapter 13)

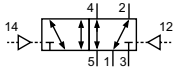


Pneumatically operated spool valve. The valve switches upon pressurization of the pilot port.

5/2-way valves

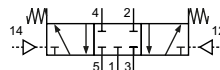


PKX-09-511
PKX-10-511
5/2-way, single pilot, mechanical spring return



PKX-09-520
PKX-10-520
5/2-way, double pilot

5/3-way valve



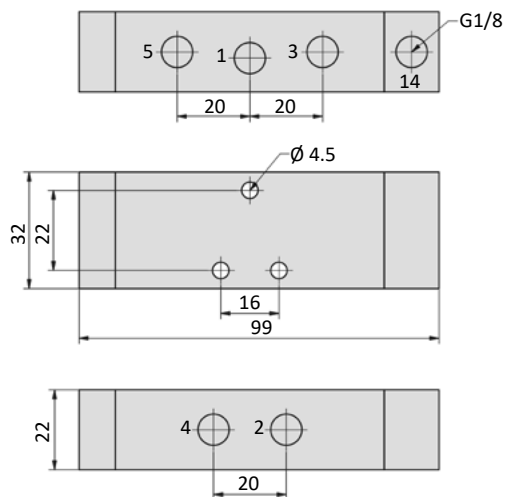
PKX-10-530
5/3-way, center position closed

Technical data

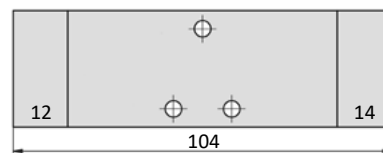
Model-no.:	PKX-09-511	PKX-09-520	PKX-10-511	PKX-10-520	PKX-10-530
Operating pressure (bar)	3 ... 8	3 ... 8	3 ... 8	3 ... 8	3 ... 8
Pilot pressure (bar)	3 ... 8	3 ... 8	3 ... 8	3 ... 8	3 ... 8
Flow rate (l/min)	1080	1110	1980	1920	1770
Weight (kg)	0.450	0.460	1.120	1.170	1.160

Dimensions

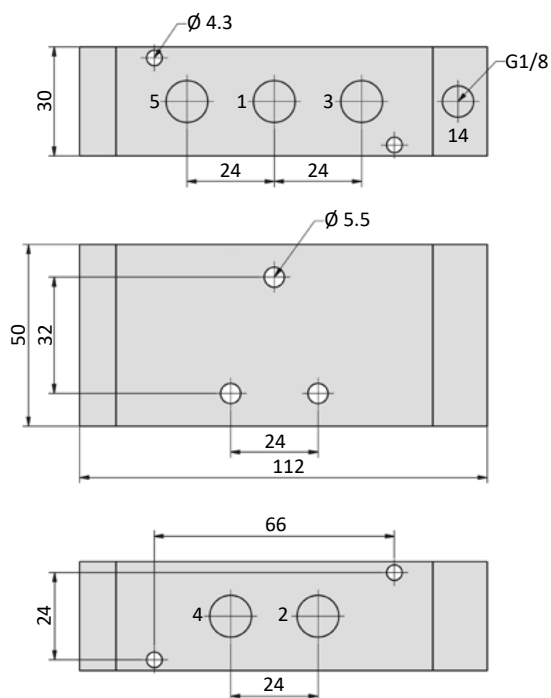
PKX-09-511



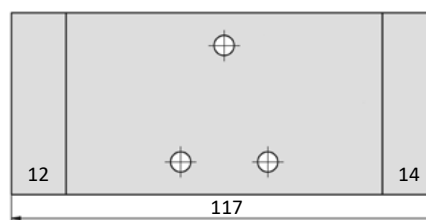
PKX-09-520



PKX-10-511



PKX-10-520, PKX-10-530



1 = pressure inlet
2,4 = outlets
3,5 = exhausts
12,14 = pilot ports
Pilot ports can be repositioned by 180°.

Series ICKN-55

NAMUR

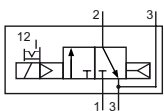
Technical details

Connection	G1/4, Namur
Nominal size	6 mm
Temperature range	-30°C ... +80°C
Medium	Filtered, oil-free and dried compressed air according to ISO 8573-1:2010, Class 7:2:4, instrument air, free of aggressive additives. Differing the pressure dew point must be at least 10°C below lowest occurring ambient temperature.
Materials	Body: Al (anodized), seals: FKM , inner parts: Al, stainless steel and brass
Protection	IP 65 according to EN 60529

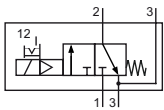


Electrically operated spool valve. The manual override is detent and is operated by screwdriver. The location pin, screws and seals are included.

3/2-way valves

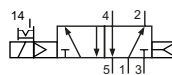


ICKN-55-310-HN-xxx
3/2-way, single solenoid, air spring return, NC

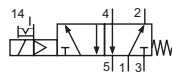


ICKN-55-311-HN-xxx
3/2-way, single solenoid, mechanical spring return, NC

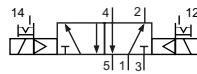
5/2- and 5/3-way valves



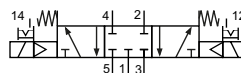
ICKN-55-510-HN-xxx
5/2-way, single solenoid, air spring return



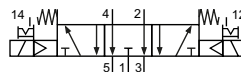
ICKN-55-511-HN-xxx
5/2-way, single solenoid, mechanical spring return



ICKN-55-520-HN-xxx
5/2-way, double solenoid



ICKN-55-530-HN-xxx
5/3-way, center position closed



ICKN-55-533-HN-xxx
5/3-way, center position exhausted

Please complete: xxx = electrical option

Electrical options

Nominal Ivoltage	Power consumption	Specifics	Plug connection*1	-xxx
24 V DC	4.2 W		Form B industrial norm	-F42

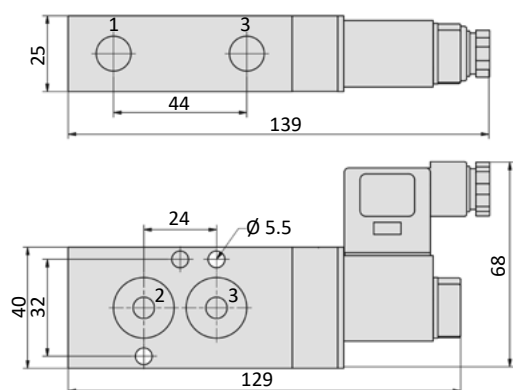
*1 Plug socket not included, suitable plug sockets see page 6-14.

Technical data

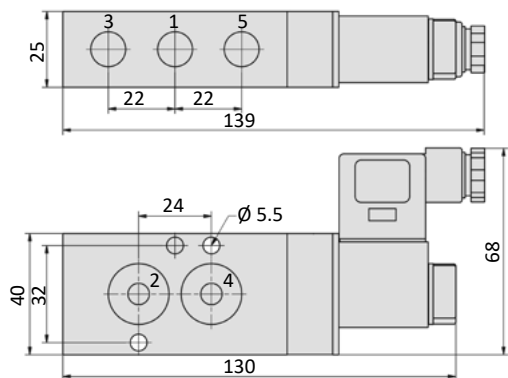
Model-no.:	ICKN-55-310	ICKN-55-311	ICKN-55-510	ICKN-55-511	ICKN-55-520	ICKN-55-530	ICKN-55-533
Operating pressure (bar)	3 ... 8	3 ... 8	3 ... 8	3 ... 8	2 ... 8	3 ... 8	3 ... 8
Pilot pressure (bar)	3 ... 8	3 ... 8	3 ... 8	3 ... 8	2 ... 8	3 ... 8	3 ... 8
Flow rate (NI/min)	780	780	900	800	900	680	680
Response time (ms) at 6 bar	on: 16 off: 18	on: 13 off: 16	on: 16 off: 17	on: 16 off: 18	on: 14 off: 14	on: 14 off: 16	on: 14 off: 16
Weight (kg)	0.320	0.320	0.320	0.320	0.440	0.440	0.440

Dimensions

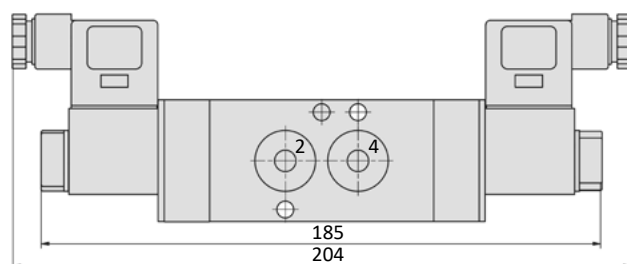
ICKN-55-31x-HN



ICKN-55-51x-HN



ICKN-55-520-HN, ICKN-55-53x-HN



1 = pressure inlet
2,4 = outlets
3,5 = exhausts

Plug socket (not included in scope of delivery) can be repositioned by 180°.
Solenoid coil can be repositioned.

Accessories




Plug sockets: page 6-14

Series KNX-55

NAMUR



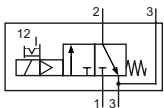
Technical details

Connection	G1/4, Namur
Nominal size	6 mm
Temperature range	-30°C ... +80°C
Medium	Filtered, oil-free and dried compressed air according to ISO 8573-1:2010, Class 7:2:4, instrument air, free of aggressive additives. Differing the pressure dew point must be at least 10°C below lowest occurring ambient temperature.
Materials	Body: stainless steel 1.4571, seals: PU, NBR, inner parts: stainless steel 1.4305
Protection	IP 65 according to EN 60529
	Valves in accordance with 2014/34/EU (ATEX) available. (Chapter 13)

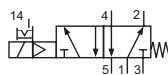


Electrically operated spool valve. The manual override is detent and is operated by screwdriver. The location pin, screws and seals are included.

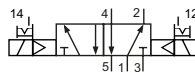
3/2-way valve



KNX-55-311-HN-xxx
3/2-way, single solenoid, mechanical spring return, NC



KNX-55-511-HN-xxx
5/2-way, single solenoid, mechanical spring return



KNX-55-520-HN-xxx
5/2-way, double solenoid

Please complete: xxx = electrical option

Electrical options

Nominal voltage	Power consumption	Specifics	Plug connection ^{*1}	-xxx
24 V DC	4.2 W		Form B industrial norm	-F42

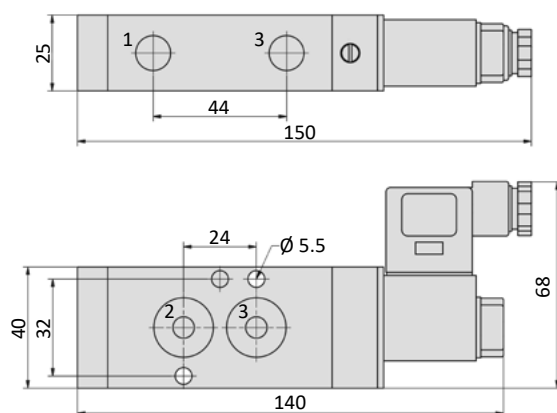
^{*1} Plug socket not included, suitable plug sockets see page 6-14.

Technical data

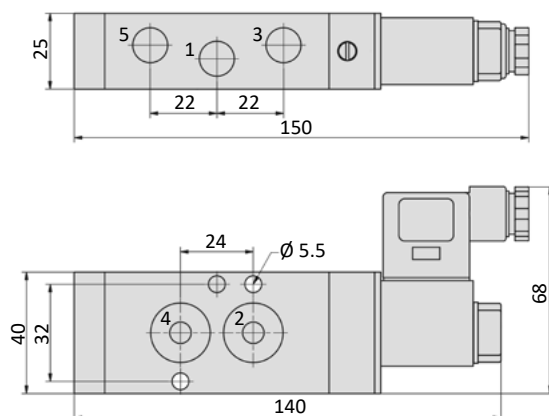
Model-no.:	KNX-55-311	KNX-55-511	KNX-55-520
Operating pressure (bar)	3 ... 8	3 ... 8	3 ... 8
Pilot pressure (bar)	3 ... 8	3 ... 8	3 ... 8
Flow rate (NI/min)	1280	1060	1050
Response time (ms) at 6 bar	on: 13 off: 47	on: 12 off: 74	on: 14 off: 14
Weight (kg)	0.670	0.660	0.720

Dimensions

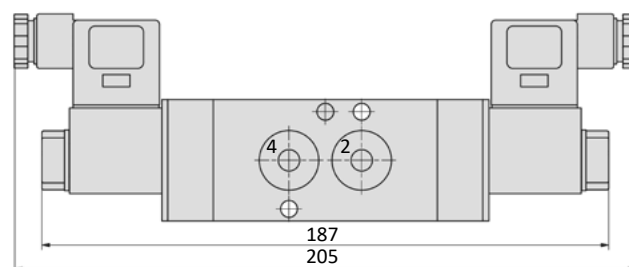
KNX-55-311-HN



KNX-55-511-HN



KNX-55-520-HN



1 = pressure inlet
2,4 = outlets
3,5 = exhausts

Plug socket (not included in scope of delivery) can be repositioned by 180°.
Solenoid coil can be repositioned.

Accessories



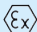
Plug sockets: page 6-14

Series PNX-55

NAMUR



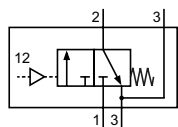
Technical details

Connection	G1/4, Namur
Nominal size	6 mm
Temperature range	-30°C ... +80°C
Medium	Filtered, oil-free and dried compressed air according to ISO 8573-1:2010, Class 7:2:4, instrument air, free of aggressive additives. Differing the pressure dew point must be at least 10°C below lowest occurring ambient temperature.
Materials	Body: stainless steel 1.4571, seals: PU, NBR, inner parts: stainless steel 1.4305
Protection	IP 65 according to EN 60529
	Valves in accordance with 2014/34/EU (ATEX) available. (Chapter 13)

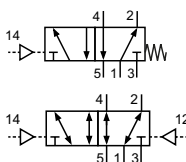


Pneumatically operated spool valve. The valve switches upon pressurization of the pilot port. The location pin, screws and seals are included.

3/2-way valve



PNX-55-311
3/2-way, single pilot, mechanical spring return



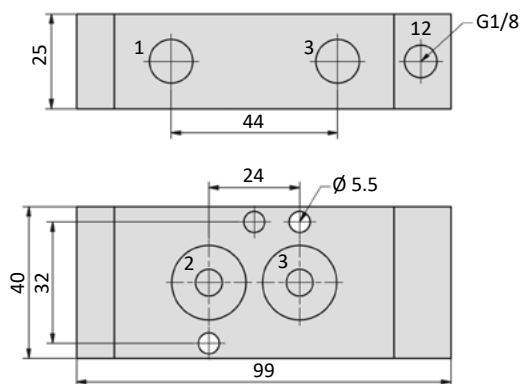
PNX-55-511
5/2-way, single pilot, mechanical spring return
PNX-55-520
5/2-way, double pilot

Technical data

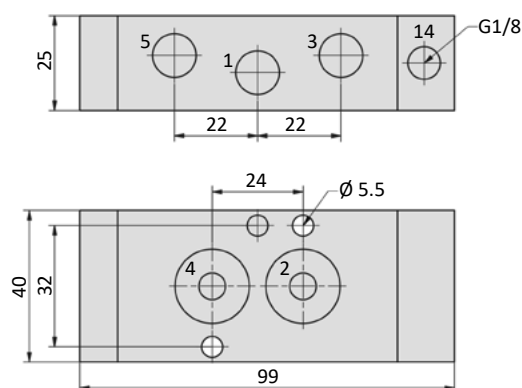
Model-no.:	PNX-55-311	PNX-55-511	PNX-55-520
Operating pressure (bar)	3 ... 8 bar	3 ... 8 bar	3 ... 8 bar
Pilot pressure (bar)	3 ... 8 bar	3 ... 8 bar	3 ... 8 bar
Flow rate (NI/min)	1280	1060	1050
Weight (kg)	0.640	0.630	0.660

Dimensions

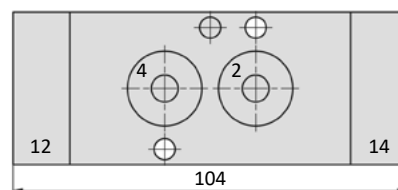
PNX-55-311



PNX-55-511



PNX-55-520



1 = pressure inlet

2,4 = outlets

3,5 = exhausts

12,14 = pilot ports

Pilot ports can be repositioned by 180°.

Plug sockets

Form B industrial norm

Overall width	22 mm
Contact distance	11 mm
Contacts	2P + E
Protection	IP 65 according to EN 60529 requires a flat gasket
For use with series	ICK-09, ICK-10, KMX-09, KMX-10, ICKN-55, KNX-55

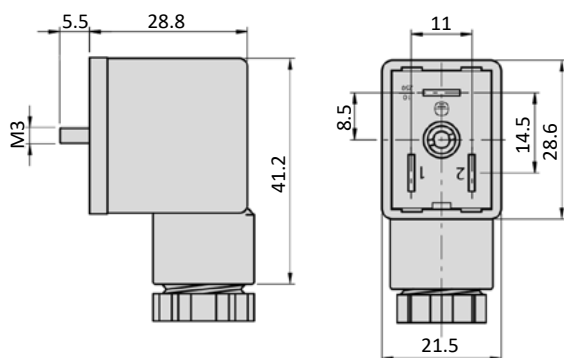


Model-no.:	28-ST-01	28-ST-04-112	28-ST-04-127	28-ST-06-112	28-ST-06-127	28-ST-06-K3-112*	28-ST-06-K3-127*
Voltage (AC/DC)	0 - 250 V	10 - 50 V	70 - 250 V	24 V	230 V	24 V	230 V
Status indicator	no	yes	yes	yes	yes	yes	yes
Protective circuit	no	no	no	yes (varistor)	yes (varistor)	yes (varistor)	yes (varistor)
Connecting cable	without	without	without	without	without	3 m	3 m
Wire cross section	max. 1.5 mm ²	max. 1.5 mm ²	max. 1.5 mm ²	max. 1.5 mm ²	max. 1.5 mm ²	3 x 0.75 mm ²	3 x 0.75 mm ²
Ø Connecting cable	6 - 8 mm	6 - 8 mm	6 - 8 mm	6 - 8 mm	6 - 8 mm		

* These plug sockets are fitted with integrated flat gaskets.

Dimensions

Form B industrial norm



Solenoid coils

Form B industrial norm

Overall width	22 mm
Contact distance	11 mm
Contacts	2P + E
Protection	IP 65 according to EN 60529 with connected plug socket
Duty cycle	100 %
Temperature range*	-40°C ... +80°C
Voltage tolerance	± 10 %
For use with series	ICK-09, ICK-10, KMX-09, KMX-10, ICKN-55, KNX-55



* The max. applicable operating temperature depends on the temperature specification of the used valve.

Model-no.:	23-SP-060-1-712
Voltage	24 V DC
Power consumption DC	4.2 W
Power consumption AC	-
Specifics	enhanced humidity resistance

6

Dimensions

Form B industrial norm

